

# Nativity Lutheran Church

## Weekend Newsletter

January 30 & 31, 2010



3312 Silver Lake Road  
Minneapolis, MN 55418  
612.781.2766  
www.nativitychurch.org

Nativity's Mission Statement: Nativity is a hospitable congregation sent by Jesus Christ to be disciples who will make a difference by bringing God's love, hope, joy and peace to the world.

**Nativity's 52nd Annual Meeting is Scheduled for Sunday, January 31 at 11:45 a.m.**

If you are a member of Nativity, please join us.

### **Book of Faith Lenten Journey: 40 Days with the Lord's Prayer**



The *Book of Faith 40-Day Lenten Journey* is a devotional resource connecting forty personal daily readings and weekly worship with the study of Scripture. The forty devotional readings included

are structured around seven key petitions of The Lord's Prayer. The 40-day journey will help engage everyone in devotional reading of Scripture.

Due to printing deadlines, reserve your book by Feb. 14. Sign up in the notebook on the Welcome Desk or respond in the weekend yellow sheet.

When the books arrive, they will be sold from the bookstore.

Cost: \$8.

### **Scripture Reading for the Weekend of February 6 & 7 Luke 5:1-11**

#### **Jesus Calls the First Disciples**

Can you remember the first time you really understood who Jesus was? Today we're studying what is surely an eyewitness account of the calling of Peter, James, and John, carefully transcribed by Luke, and placed in his Gospel. Matthew 4:18-22 and Mark 1:16-20 both record the call of Peter and Andrew, James and John along the shore. But Luke's account is especially vivid.

#### **Music for the Weekend:**

On February 6 & 7, the theme for the day is *Music of Justice and Joy: "Come—Follow"* Nativity Choir will sing at the 9 & 10:30 a.m. worship services on Sunday morning. Soloists will sing on Saturday night, 5:30 p.m. and Sunday morning, 8:00 a.m. There will be new liturgy sung during communion.

On February 13 & 14, the theme for the worship services will be "It is Good, Lord, to be here." Global Folk and Voices of Women will perform musical reflections on the Transfiguration story.

#### **Did you miss church last Sunday?**

Wondering what the sermon was about. Well, you can now find the sermons from Sunday mornings on our website: [www.nativitychurch.org](http://www.nativitychurch.org). Just click on "Sermons" in the column to the right and grow in the Word.

Wednesday Night Meals Are Back  
 \$5 meals are served every Wednesday night from 5:30-6:30 p.m. **You must sign up at the Welcome Desk by Tuesday morning.**

**CLUB 56 NIGHT**

Sundays	Club 56 Noon	Club 56 Night
Jan. 31	Club 56 Noon & Night Together Plus Parents in Fellowship Hall	4:30 – 5:56pm
Feb. 7	<i>No Club 56</i> (Noon & Night Leaders' Meeting - Room 117) 11:30 – 12:30 p.m.	
Feb. 14	11:30am - 12:56 p.m.	4:30 – 5:56 p.m.
Feb. 21	11:30am - 12:56 p.m.	4:30 – 5:56 p.m.
Feb. 28	11:30am - 12:56 p.m.	4:30 – 5:56 p.m.

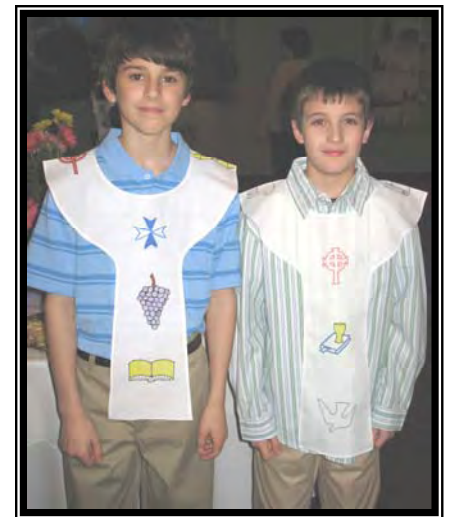


**First Communion Class Dates**

- Part 1: Sunday, March 14, 4-6 p.m.
- Part 2: Sunday, March 21, 4-6 p.m.
- Part 3: Sunday, March 28, 4-6 p.m.
- Seder Meal, Wednesday, March 31, 6:30-9 p.m.
- First Communion during Maundy Thursday Service, Thursday, April 1, 7 p.m.

Note to parents: The First Communion Class is for children and their parents. Families attend all 3 classes, the Seder Meal and the Maundy Thursday Worship Service. *The class is recommended for children who are in Grades 2 – 5.* Parents of 5<sup>th</sup> graders who have not previously participated in the First Communion Class will receive a letter in February inviting them to register.

To sign up for the 1<sup>st</sup> Communion program, please contact Tori Setterholm at 612-781-2766 or [tsetterholm@nativitychurch.org](mailto:tsetterholm@nativitychurch.org).



## Adults

Dear sisters and brothers in Christ,

*"If one member suffers, all suffer together with it;  
if one member is honored, all rejoice together with it."*

—1 Corinthians 12:26

Almost two weeks have passed since the devastating earthquake in Haiti. The outpouring of gifts from members of the Evangelical Lutheran Church in America (ELCA) to ELCA Disaster Response has enabled a swift response on behalf of this church. Thank you for your generous financial support which now totals more than \$1.6 million. Thousands of other gifts are still being counted. Our community-based partners are already providing:

- Two **water** purification systems to bring clean water to 25,000 people.
- Emergency **food** and **medical supplies** to thousands.
- Blankets and tents to **shelter** 10,000 people who are homeless.

Funding, distributed through three partners, will increase as giving continues.

- \$300,000 has been sent to The Lutheran World Federation (LWF), a key responder and member of Action by Churches Together (ACT). The funds support LWF efforts to provide shelter to people left homeless by the quake.
- \$150,000 has been sent to Lutheran World Relief (LWR), Baltimore, for material aid.
- \$150,000 has been sent to Church World Service (CWS) for construction of temporary water systems and distribution of water purification materials.

In addition, \$25,000 has been sent to Lutheran Services of Florida for initial support to refugees and Haitian Americans entering or returning to the United States.

We are pleased that Louis Dorvillier, director for International Development and Disaster Response in the ELCA Global Mission program unit, is part of a delegation to his country of origin with LWF and ACT.

**Your generosity makes this life-saving work possible.** As we celebrate this outpouring of gifts and prayers, we also know that we have a long road to travel together. There is so much more to be done. This church is committed to walking with our brothers and sisters in Haiti for years to come; your continued support is needed to provide ongoing care.

I encourage you to visit the ELCA Disaster Response ([www.elca.org/disaster](http://www.elca.org/disaster)) Web site for updated information, worship resources, bulletin inserts and details on how to offer financial support.

General mission-support dollars and gifts to ELCA Vision for Mission make it possible for 100 percent of your gifts designated for Haiti Earthquake Relief to be used entirely for this response effort.

To give today, go online ([www.elca.org/haitiearthquake](http://www.elca.org/haitiearthquake)) or call 800-638-3522.

In God's grace,

The Rev. Mark S. Hanson  
Presiding Bishop  
Evangelical Lutheran Church in America

P.S. View more photos of your gifts at work ([www.elca.org/bishopstatement](http://www.elca.org/bishopstatement)).



Photo credit: Paul Jeffrey/ACT-International



Office of the Presiding Bishop  
Evangelical Lutheran Church in America  
God's work. Our hands.

**Thank you...**

Thank you Nativity congregation! Almost \$2500 was sent to the ELCA International Disaster Relief Organization from Nativity Church, specifically going to Haiti. There are still donations coming in and being accepted, simply write Haiti on the envelope or memo of your check. Your donation is 100% tax deductible and will go to those suffering in Haiti from recent earthquakes. To read more go to ELCA.org.

On behalf of the Midwest Division staff and volunteers of the American Cancer Society, I sincerely thank you for your continued contributions. We truly appreciate your most recent gift of \$72 through Relay for Life.

Bruce A. Peterson, MD  
Volunteer, Chairperson of the Board  
American Cancer Society, Relay for Life

Thanks to all who contributed to the Blood Drive. Donors were 17; each pint is used for 3 persons—so 51 people's lives were saved!!

Eva Addison, Parish Nurse

Thank you for your gift of \$72 which we received on December 28, 2009. The financial support of churches and faith communities like yours is very encouraging. Thanks to the support and involvement of so many Bread for the World members throughout the past year, there is growing commitment of the part of Congress, the White House, and the State Department to reform U.S. foreign assistance—to make it more effective in reducing hunger in the world's poorest countries. Thank you again for your generosity—and for your active role in our efforts to end hunger in God's world. I wish you a new year filled with hope.

David Beckmann  
Bread For the World

**Next Blood Drive at Nativity  
Monday, March 22  
2:30-5:30 p.m.  
Sign up at the Welcome Desk  
Future Dates:  
June 7, Sept. 13, Nov. 29**

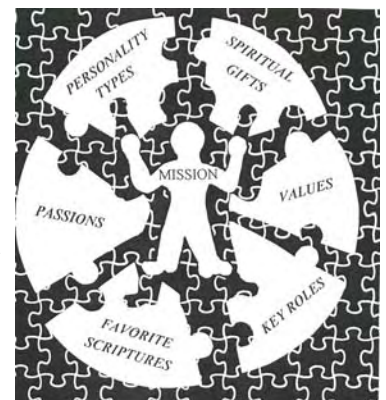
**You Can Make A Difference**

“I was able to focus on my gifts; it reminded me I have gifts and defined more than I realized.” That is how one participant reflected after attending the summer *You Can Make a Difference* workshop. The four attendees were: Merrie Beaman, Megan Beaman, Amy Larson and Jacob Overbo.

Join the winter group in discovering or rediscovering how God has created you and for what purpose at this time in your life.

Winter Workshop: 5 Sunday Mornings, 10:15am -12:15pm  
February 7, 14, 28, March 7 & 14

Suggested donation for materials: \$20. Optional Myers Briggs Step II: \$35.  
For questions or to register: Jan Frederickson, 612-781-2766 x1007  
jfred@nativitychurch.org



# Women's Winter Retreat

Don't miss a great weekend! Come and join us Feb. 19-21

We stay at Luther Park Bible Camp just outside of Danbury, Wisconsin. The camp sits beautifully on Lake 26 and we take advantage of this relaxing setting. We don't have to cook, clean, or chop wood. We just enjoy the wonderful company, weather, fireplace, and of course, the food. Enjoy the outdoors snowshoeing or cross-country skiing, or spend some time inside sewing, reading, or just resting.

The cost is \$60 for lodging and food. Volunteer drivers are welcome.

**Contact:**  
**Teresa Walbon**  
[twalbon@hotmail.com](mailto:twalbon@hotmail.com) or  
**651-635-9649**

**What is Nativity all about? How can I get involved in ministries?**

Well, we can answer those questions and more at our Step-Up-Introduction to Nativity. You may have been coming to Nativity for a while and would like to connect more and share fellowship with others. Step-Up is a perfect opportunity to just an hour of your time to find out how to connect more with God, and where you may want to go next in your faith life, family, relationships.

Our next session is:  
 Sunday, February 14  
 10:30-11:30 a.m.

## Expanded Choir Opportunities

The Seasons of Lent and Easter bring many reasons to sing. From the prayerful reflections of Lent to the joy-filled Alleluias of Easter, the soul sings its songs to God.

**All are invited to sing.**

**Maundy Thursday Service: April 1st, 7:00 p.m.— “Agape” by Marty Haugen**

**Easter Weekend: April 3 & 4**

**Saturday, 5:30 p.m. & Sunday, 9:00 & 10:30 a.m.**

**Rehearsals—Wednesdays after Lent services (8:00 p.m.) March 10, 17, 24 & 31**

Fundraising Pancake Breakfast for  
 Youth Mission Trip

Sunday Morning, February 14

8:30 a.m. - 12:00 p.m.

Tickets: \$7 adults; \$4 for children under 10  
 Menu: Pancakes, Sausages, Fresh Fruit, Juice/  
 Coffee & Milk



## PopTops

An Intergenerational Forum that meets at 9:00 a.m. in Fellowship Hall

February 7 - ***“Mission in Our Midst:***

Presenter: Susan Tjornehoj, Director of Evangelical Mission.

February 14 - ***“The Prodigal Son in Bible and Art”***

Presenters: Robert and Lucy Brusic  
Powerful and engaging! One of Jesus’ most familiar parables has caught the imagination of many artists throughout Christian history and from many cultures. Using selections from the noted Jerry Evenrud collection, this verbal and visual presentation will share some of the rich variety of interpretations. Pastor Brusic (former campus pastor at Luther Seminary) has worked with his wife Lucy to produce the beautiful book *“And Grace Will Lead You Home”*. Some of us saw this presentation at LEAFs and want our friends to hear and see.

February 21 - ***“FOOTSTEPS, A Journey in Faith”***

( DVD and discussion)

12 metro area religious leaders of Jewish, Islam and Christian faiths travel together to the Middle East to learn more about their own faith and religious tradition, and to understand each other's faith and strengthen the bonds between them. Does life ever go the way we expect?

February 28 - ***“Celebration of Life” Funerals***

Presenter: Pastor John Almlie

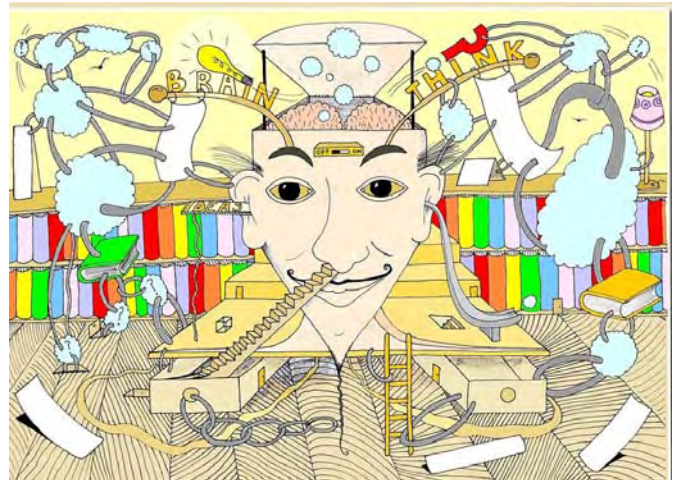
With different choices for funerals these days are you prepared to make the arrangements for your own or a loved one’s final resting place? What do you do when a child dies unexpectedly, who do you turn to for help?

Pastor John Almlie will speak on the funeral

arrangements the minister helps you with and Pam Jacobsen a prearrangement consultant will speak on what arrangements the funeral home helps you with.

March 7 - ***“The Creator and Creation”***

a lesson from *“And God Saw That It Was Good”* a Christian education course accompanying the PBS series *“The National Parks: America’s Best Idea.”* The session will include viewing an excerpt from the series, and discussion of how the national parks protect special places in God’s creation, and how protection of such places is significant to our relationship with God.



Do you want to tease your brain or just have fun? How about...

### **GAMENIGHT Replay!**

We’ve got an inexpensive way to have fun with positive people. Join our “last Sunday of the Month” group as we laugh playing Catch Phrase or any variety of games you would like to play and share. Share a favorite snack and - Let the Good Times Begin! Ages 21-100!

Sundays, Feb 28, March 28, April 25, May 24, 6:00-8:00pm

If you have questions contact Kirsten at [kirstene.fisher@yahoo.com](mailto:kirstene.fisher@yahoo.com).

**What's Happening At Nativity (January 31 through February 6, 2010)**

**Sunday, January 31**

- 7:30am Mission Trip Lock-in Ends
- 8:00am Communion Worship Service
- 9, & 10:30am  
Worship Service
- 9 & 10:30am  
Nursery birth-3 years of age
- 9 & 10:30am  
Faith Formation for Children ages  
3 years through 4th grade.
- 9:00am PopTops
- 10:30am The Spirit Liturgy Class
- 10:30am Single Women's Bible Study
- 4:00pm Bible Study
- 4:30pm Club 56 Noon and Night

**Monday, February 1**

- 9:30am LSS Auxiliary
- 4:30pm ARTS
- 6:00pm Smart Start in 2010
- 7:00pm Growing Together
- 7:15pm Adult Bells

**Tuesday, February 2**

- 6:30am Tuesday AM Breakfast Class
- 6:45pm Stephen Ministry Training Class
- 7:00pm Open AA Meeting

**Wednesday, February 3**

- 9:30am Wednesday AM Bible Study
- 10:00am Morning Playgroup
- 1:00pm Staff Meeting
- 5:30pm Wednesday Night Dinner
- 6:00pm Nativity Singers
- 6:15pm Voices of Women
- 6:30pm 7-9 Grade Confirmation
- 6:30pm Bible Study led by Jerry Hoffman
- 7:00pm Music Mix
- 7:00pm Nativity Choir
- 8:30pm Voices of Men

**Thursday, February 4**

- 9:00am Word to the Wise Bible Study
- 10:00am The Gathering
- 10:00am Nativity Play Group

**Thursday, February 4 (continued)**

- 4:00pm Cursive Friends
- 6:30pm Love and Logic Class
- 7:00pm Global Folk
- 7:00pm Stephen Ministry Meeting
- 7:00pm Girl Scouts

**Friday, February 5**

- 7:45am Bulletin Stuffers
- 7:15pm Prime Tymers Game Night

**Saturday, January 30**

- 9:00pm Transform
- 4:00pm Worship Music Rehearsal
- 5:15pm Nursery Birth-3 Years of Age
- 5:30pm Faith Formation for Children  
ages 3 years through 4th  
Grade
- 5:30pm Communion Worship Service

**How Can I Continue on My  
"Journey of Discipleship"?**

**Come to one or all sessions. Everyone is welcome.**

**"Transform" Session**

Practical hands-on event to discover the six habits of faith and personalize them for your own life.

Saturday, Feb 6, 9 am-12 pm,

Saturday, April 10, 9 am-12 pm

**"Affirm" Session**

Discover your spiritual gifts and passions.

Saturday, Feb. 13, 9 am-11 pm

Saturday, April 17, 9 am-11 pm

**"Reach Out" Session**

Define your core values, discuss what a mission is and write a mission statement.

Offered as needed.

For more information contact: Jan  
Frederickson, 612-781-2766 x1007,  
jfred@nativitychurch.org

**Nativity Staff:**

Glenn Seefeldt - pastor - gseefeldt@nativitychurch.org  
John Almlie - senior ministries pastor  
Eva Addison - parish nurse - evaddison@nativitychurch.org  
Kristen Brechler - interim youth pastor - kbrechler@nativitychurch.org  
Sharon Damsgard - administrative assistant - sdamsgard@nativitychurch.org  
Jodi Dean - administrative assistant - jdean@nativitychurch.org  
Marilyn Eberlein - adult faith formation  
Vicki Elliott - business administrator - velliott@nativitychurch.org  
Shelbie Ewing, April Martinez - nursery coordinators - nursery@nativitychurch.org  
Jan Frederickson - shared ministry - jfred@nativitychurch.org  
Ken Gruhlke - custodian - kgruhlke@nativitychurch.org  
Sally Hockert, Pat Shun & Darla Frantz - wedding coordinators  
David Livingston - adult music - drlivingston@nativitychurch.org  
Robert Moreland - custodian  
Freda Myhrwold - worship leader  
Bob Parrott - sound/video - bobparrott@nativitychurch.org  
Karla Reiland - children's music and adult handbells - kreiland@nativitychurch.org  
Sara Schmidt - children's preschool ministry - sschmidt@nativitychurch.org  
Tori Setterholm - children's ministry - tsetterholm@nativitychurch.org  
Gregory Theisen - pianist  
Becky Thorvig - communications - bthorvig@nativitychurch.org  
Manda Truchinski - youth leader - mandat@nativitychurch.org  
Nativity Child and Family Center (612.781.1537) - Cheryl Jechorek, Director -  
cjechorek@nativitychurch.org

Phone: 612.781.2766

Website: [www.nativitychurch.org](http://www.nativitychurch.org)

**Nativity Council:**

Kent Horsager - Interim President - kent@wingriver.com  
Joe Hansen - Secretary - hansenjd@gmail.com  
Tom Grahek - Treasurer - tgrahek@hotmail.com  
Britta Brown - Member at Large - britta486@hotmail.com  
Tim Quinlan - Member at Large - timmyquinlan@comcast.net  
Bjorn Oksnevad - Member at Large - boksnevad@gmail.com  
Steve Cook - Member at Large - stevecathycook@comcast.net  
Donna Steinwand - Member at Large - donnasteinwand@comcast.net  
Lydia Rude - Youth Representative - lydiamr14@gmail.com

**Deadline for articles for Weekend Newsletter are due Thursday mornings (10 days prior to the weekend the article will appear.) If you have questions contact Becky at ext. 1003.**